



# VNE505 - VNY450

## Rating Definition

### Prime Power - VNE505

Rating corresponds to ISO Standard Power for continuous operation. It is applicable for supplying electrical power at variable load for an unlimited number of hours instead of commercially purchase power. A 10% overload capability for governing purpose is available for this rating .

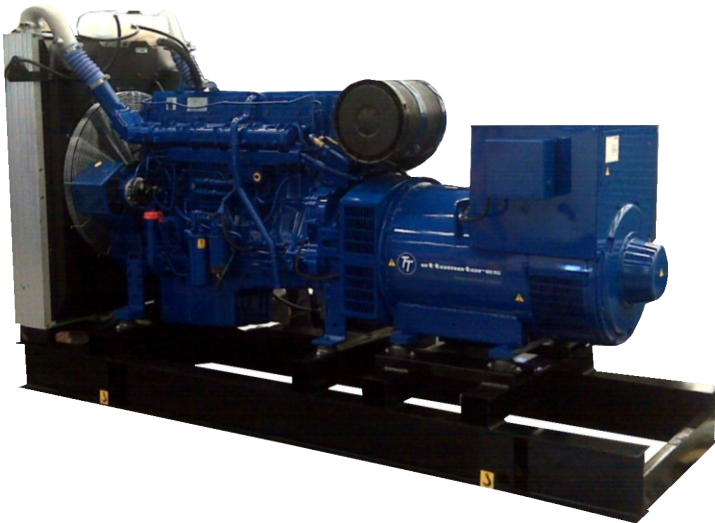
### Standby Power - Model VNY450

Is applicable for supplying standby electrical power at variable load in areas with well establish electrical networks in the event of normal failure.

No overload capavility is available for this rating 1hp = 1kW-1.36

**Note:** the engine performance corresponds to ISO3046, BS5514 and DIN 6217.

Power output guaranteed within 0 to +2% att rated ambient conditions at delivery, Ratings are based on ISO8528.



Output Ratings				0.8 p.f)
Frequency	Models	Voltage	kVA	kWe
50 Hz	VNE505	380-415V	461 (125/40 ris $\phi$ )	368
60 Hz	VNY450	440-220V	563 (163/27 ris $\phi$ )	450

Technical data		
<b>Engine Model:</b>	TAD1640GE	
<b>Number of Cylinders:</b>	6 In-line	
<b>Bore:mm (in)</b>	144 (5.67)	
<b>Stroke:mm (in)</b>	165 (6.50)	
<b>Displacement:ts(in<sup>3</sup>)</b>	16.12 (984)	
<b>Compression ratio:</b>	17.5:1	
<b>Performance</b>	<b>1500rpm-PRIME</b>	<b>1800rpm-Standby</b>
<b>With Fan:kW(hp)</b>	392 (533)	479 (651)
<b>Lubrication system</b>	<b>1500rpm-PRIME</b>	<b>1800rpm-Standby</b>
<b>Oil consumption:lt/h(gal/h)</b>	0.10 (0.026)	0.11 (0.029)
<b>Total oil incl filters:liter)</b>	48	48
<b>Fuel system</b>	<b>1500rpm-PRIME</b>	<b>1800rpm-Standby</b>
<b>100% load g/kWh(lb/hph)</b>	200 (0.323)	206 (0.334)
<b>Intake &amp; exhaust system</b>	<b>1500rpm-PRIME</b>	<b>1800rpm-Standby</b>
<b>Air consum.m<sup>3</sup>/min (cfm)</b>	31.7 (1119)	42.6 (1504)
<b>Max.restriction:kP (In wc)</b>	5 (20.1)	5 (20.1)
<b>Heat rejection to exhaust:kW (BTU/min)</b>	299 (17004)	381 (21667)
<b>Exhaust gas temp:°C (°F)</b>	452 (846)	444 (831)
<b>Max.back-pressure:kP (In wc)</b>	10 (40.2)	10 (40.2)
<b>Exhaust gas flow:m<sup>3</sup>/min (cfm)</b>	74.8 (2642)	98.0 (3461)
<b>Cooling system</b>	<b>1500rpm-PRIME</b>	<b>1800rpm-Standby</b>
<b>Heat rejection rad from engine: kW (BTU/min)</b>	18 (1024)	22 (1251)
<b>Fan consumption:kW(hp)</b>	9 (12)	15 (20)
<b>Generating Set Model:</b>	<b>VNE505</b>	<b>VNY450</b>
<b>Alternator Model</b>	HCI534D	HCI434C
<b>Insulation System:</b>	Class H	
<b>Control System:</b>	Self exited	
<b>AVR</b>	MX341	

Dimensions and Weights			
Length:cm	Width:cm	Height:cm	VNE505
340	127	189	Dry: 3258 kgs/Wet: 3328 kgs
			VNY450
			Dry: 3128 kgs/Wet: 3198 kgs

Inyen, S.A. de C.V.  
carlos.vargas@inyen.com.mx  
ventas@inyen.com.mx  
ventas3@inyen.com.mx